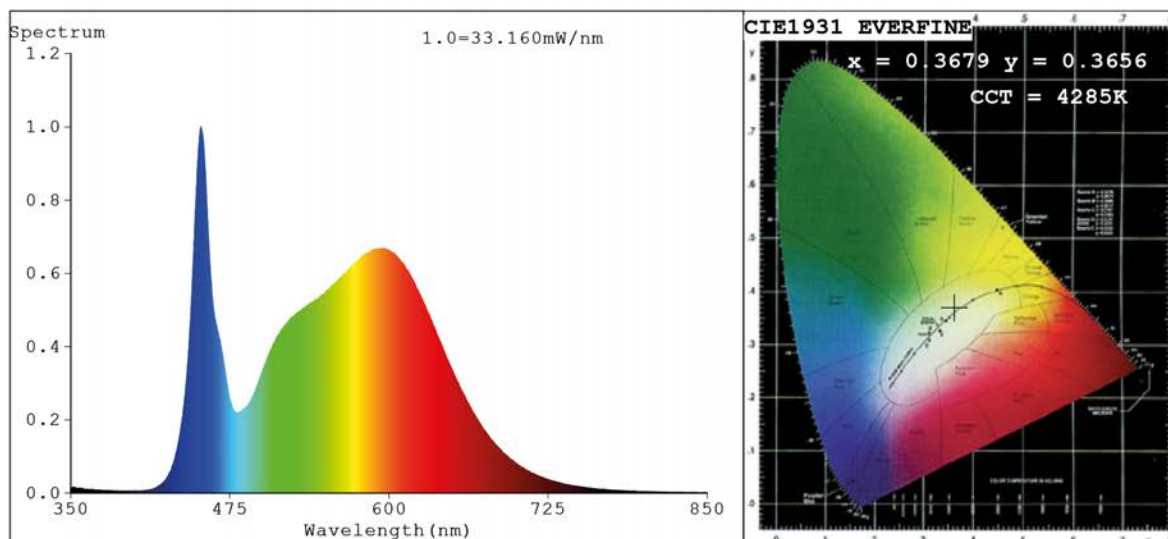


## Spectrum Test Report



### Color Parameters:

Chromaticity Coordinate:  $x=0.3679$   $y=0.3656$   $u'=0.2212$   $v'=0.4947$   
 CCT=4285K (Duv=-0.0014) Dominant WL:  $\lambda_d = 578.9\text{nm}$  Purity=20.1%  
 Ratio: R=17.8% G=78.2% B=4.0%; Peak WL:  $\lambda_p = 452.2\text{nm}$  FWHM=17.8nm  
 Render Index: Ra=84.2 CRI=77.9 TM30: Rf=82 Rg=95  
 R1 =83 R2 =91 R3 =95 R4 =83 R5 =83 R6 =86 R7 =86  
 R8 =67 R9 =14 R10=77 R11=82 R12=60 R13=86 R14=98 R15=78

### Photo Parameters:

Flux = 1303 lm Eff. : 123.32 lm/W  $\Phi_e = 4.028\text{ W}$

### Electrical parameters:

V = 23.998 V I = 0.4403 A P = 10.57 W PF = 1.000

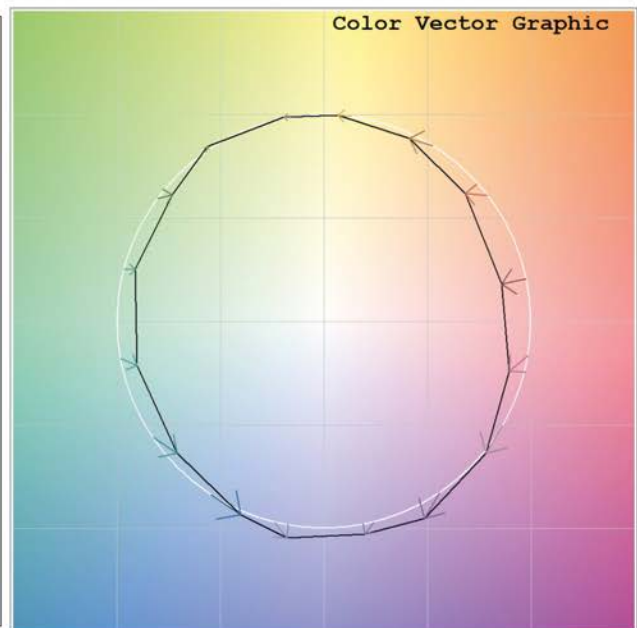
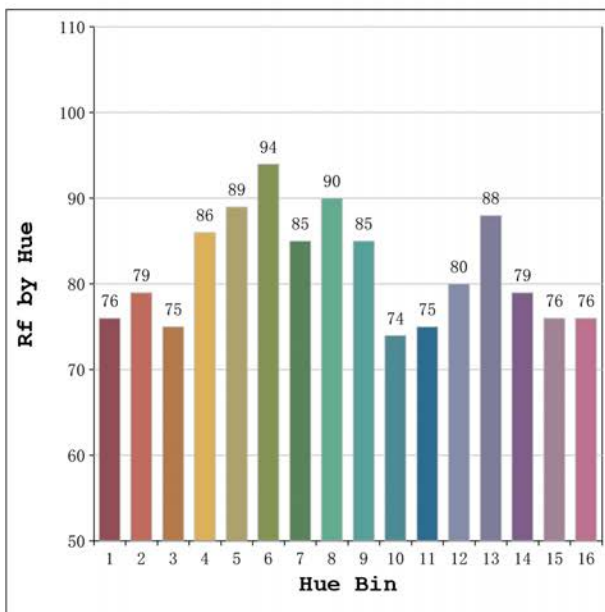
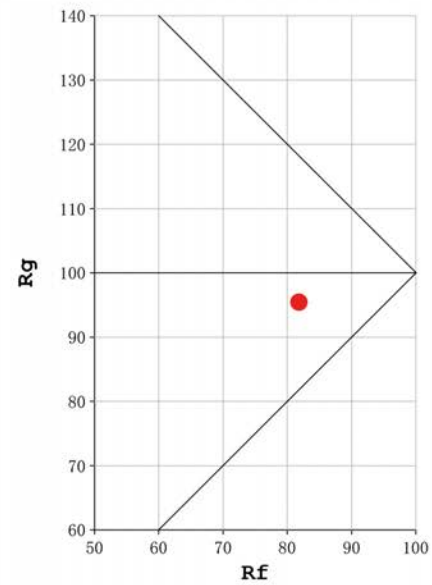
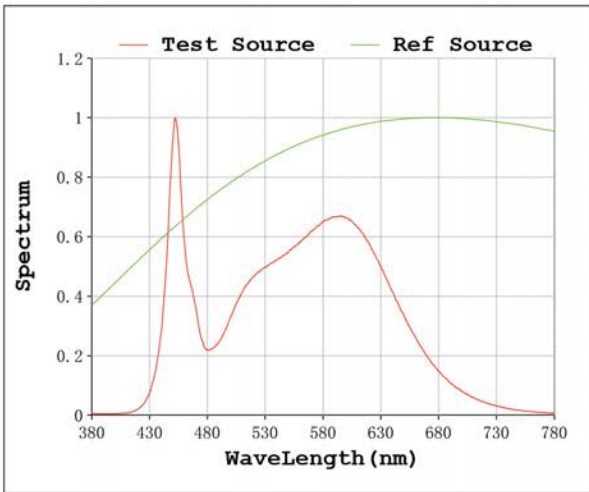
Status: Integral T = 1108 ms  $I_p = 49897$  (76%)

Model: Ávila free cut 4200K  
 Tester: Sergio Carneros  
 Temperature: 25Deg  
 Manufacturer: Luz Negra S.L

Number: 33.334  
 Date: 2025-09-01 11:18:33  
 Humidity: 51%  
 Remarks: 100cm de tira flexible



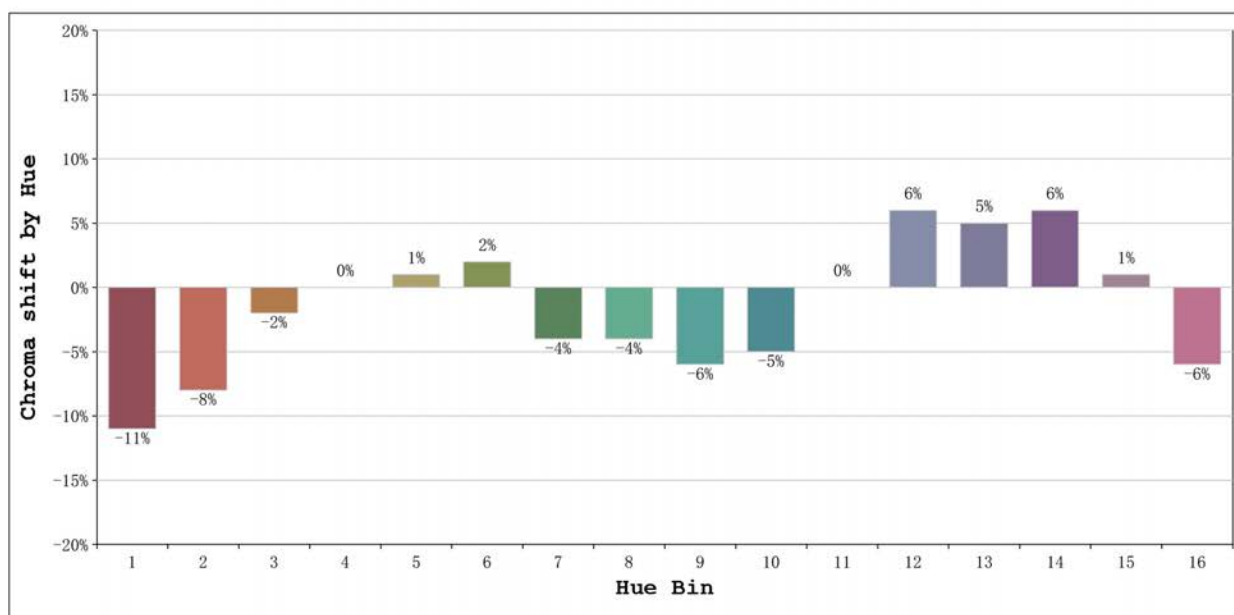
**Rf: 82**      **CCT: 4285 K**      **u': 0.2212**  
**Rg: 95**      **Duv: -0.0014**      **v': 0.4947**



Model: Ávila free cut 4200K  
 Tester: Sergio Carneros  
 Temperature: 25Deg  
 Manufacturer: Luz Negra S.L

Number: 33.334  
 Date: 2025-09-01 11:18:33  
 Humidity: 51%  
 Remarks: 100cm de tira flexible





			Graphic shift(%)	
Hue Bin	Hue Angle	Rf	Chroma	Hue
1	0.0° - 22.5°	76	-11	0
2	22.5° - 45.0°	79	-8	7
3	45.0° - 67.5°	75	-2	11
4	67.5° - 90.0°	86	0	7
5	90.0° - 112.5°	89	1	4
6	112.5° - 135.0°	94	2	-1
7	135.0° - 157.5°	85	-4	-4
8	157.5° - 180.0°	90	-4	0
9	180.0° - 202.5°	85	-6	5
10	202.5° - 225.0°	74	-5	13
11	225.0° - 247.5°	75	0	17
12	247.5° - 270.0°	80	6	8
13	270.0° - 292.5°	88	5	-4
14	292.5° - 315.0°	79	6	-12
15	315.0° - 337.5°	76	1	-14
16	337.5° - 360.0°	76	-6	-8

Model: Ávila free cut 4200K  
 Tester: Sergio Carneros  
 Temperature: 25Deg  
 Manufacturer: Luz Negra S.L

Number: 33.334  
 Date: 2025-09-01 11:18:33  
 Humidity: 51%  
 Remarks: 100cm de tira flexible